



**Founder's Innovation Prize
Grand Championship Finalist**

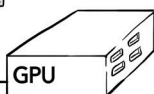
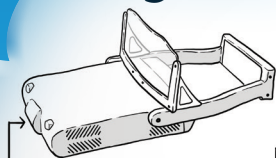
Epic Eagle Head Up Display



Features:

- » Four times brighter than military HUDs
- » Focused on infinity
- » Full Color

Eagle-2 HUD & GPU



HUD: \$1500
GPU: \$800
GPU-V: \$900

**EAA 2022
Special
Prices**

Portable/carry on item. Requires no approval or certification per FAA Ref AC91.21-1c Section 5.



Epic Eagle

**FIRST AND ONLY TRUE HUD
FOR GENERAL AVIATION**

HEAD UP, EYES OUT

Soaring with the Epic Eagle:

- » Places all critical safety of flight information right in front of your eyes, without looking down in the cockpit.
- » Improves situational awareness related to conflicting traffic and other potential hazards throughout all phases of flight: the same reason military and commercial pilots use HUDs.
- » Reduces potential vertigo through elimination of head movement in IFR conditions.
- » Provides earlier approach stabilization and visualization of intended point of touchdown.
- » GPU now interfaces with Garmin, Avidyne, Dynon SkyView, Advanced Flight Displays, GRT, Aspen and Archangel ADAHRS systems to drive HUD with real-time avionics data.
- » The scaling of the HUD is pilot configurable to accurately match the HUD field of view (FoV), giving a conformal view of the symbology with the outside world.

info@epicoptix.com
<https://epicoptix.com/epic-eagle/>



Epic Eagle

The Epic Eagle allows you to fly distraction-free by giving you critical flight information without taking your eyes away from the sky. Epic Optix has improved the technology of military and air carrier pilots and brought it into the world of general aviation in a cost-effective way.

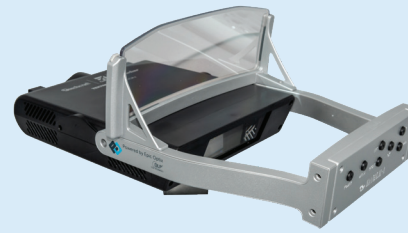
The ease and sophistication of flying has changed significantly in the last few years: from steam gauges to glass cockpits, and parachutes for planes. The Epic Eagle is the next major improvement in general aviation flight safety, as the HUD provides improved Situational Awareness (SA) and pilot safety.

The Epic Eagle provides visually enhanced flight information, minimizing the time that a pilot's eyes are down in the cockpit, and allowing full focus on what really matters.

We're here to bring you safely home.

info@epicoptix.com
<https://epicoptix.com/epic-eagle/>

SPECIFICATIONS



Display	Eagle-2	GPU/GPU-V
Resolution	1280x480 WXGA (Cropped HD)	
Aspect Ratio	16:6	
Brightness	> 20,000 nits	
Contrast Ratio	1000:1	
Eyebox	3.5in x 1.0in	
FOV (Field of View)	13° Horizontal	
Display Type	0.45" WXGA TI DLP®	
Light Source	LED RGB Illumination	
Day/Night Mode	For flying in very bright and very dark environments	
Sizing		
Dimensions	19.9cm x 32.45cm x 12.01cm (7.8in x 12.8in x 4.7in)	GPU: 3.7in x 2.8in x 1.5in GPU-V: 3.7in x 2.8in x 2.5in
Weight	< 1.6 lbs.	< 0.5lb
Power & Components		
Power	Power supply operates from 12V-28V DC	3v – 30v
Input	Wi-Fi HDMI Input for Direct Video Connections from Graphics Processing Unit (GPU) and Tablet Devices	Both: DB-15 Arinc 429 Connector for Garmin G1000 etc. High/Low speed configurable, 7 Inputs and 1 Output (not currently used) DB-9 RS-232 Serial Connector (Dynon, Advanced Flight Displays interfaces) MicroSD Card slot GPU-V: HDMI Input for Camera Overlay on graphics
Output		HDMI Out to HUD

Variety of Mounting Options

Fits the glareshield of most General Aviation Aircraft with a variety of mounting options using universal or custom hardware to suit pilots' individual needs. You will be ready to fly in minutes.